

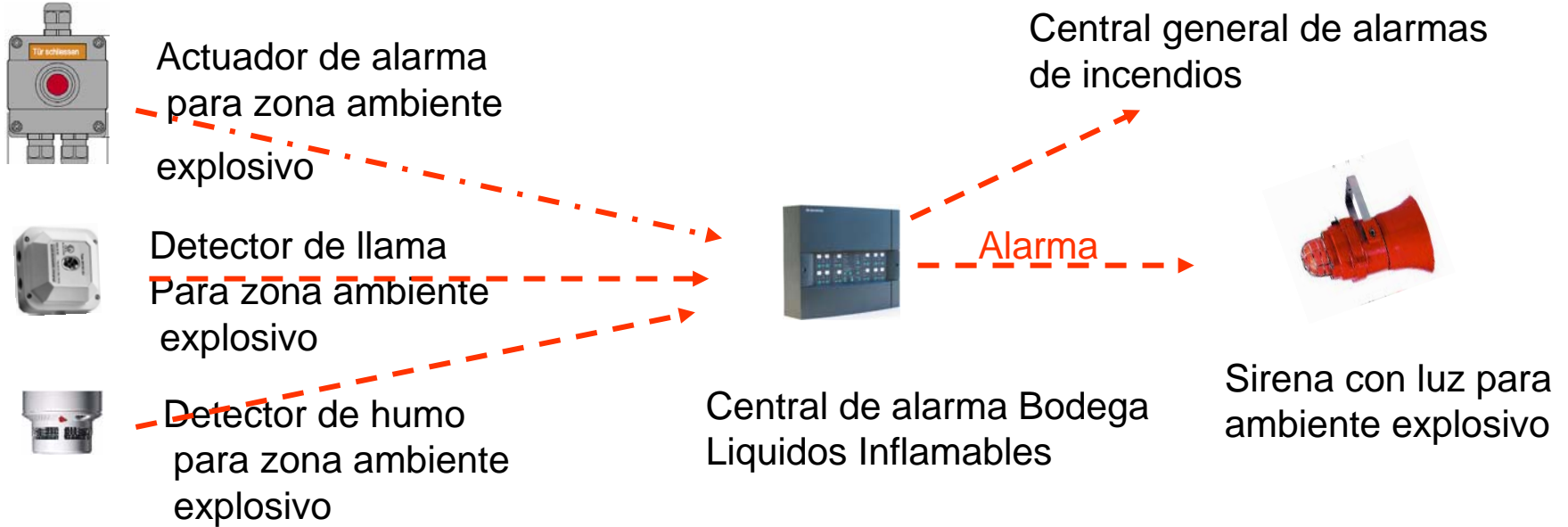
A close-up photograph of a control panel, likely for a fire detection system. The panel is light-colored and features a small rectangular screen on the left. To the right of the screen is a vertical row of five buttons, each with a small red indicator light above it. The buttons are arranged in a slightly descending staircase pattern. The background is blurred, showing what appears to be a window or a light source.

SISTEMA DE DETECCIÓN DE INCENDIOS BODEGA LIQUIDOS INFLAMABLES

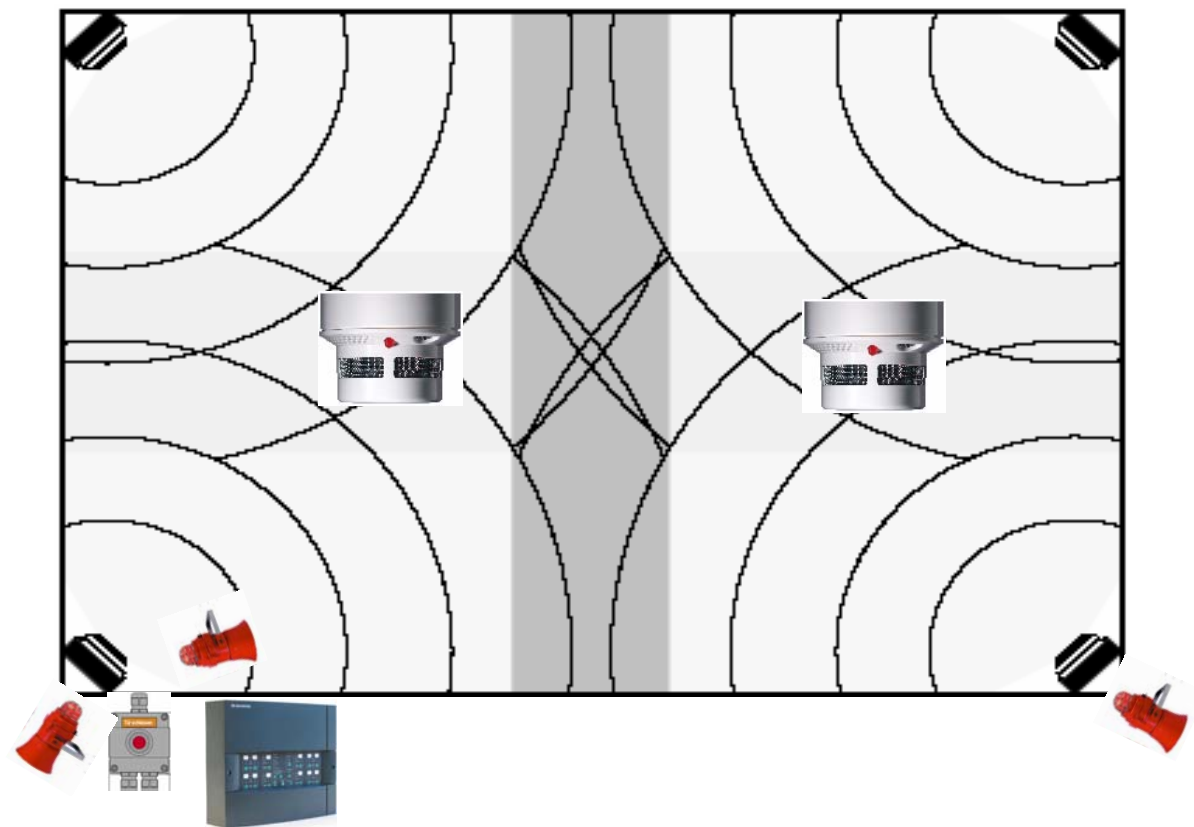
 **SECURITON**

For your safety

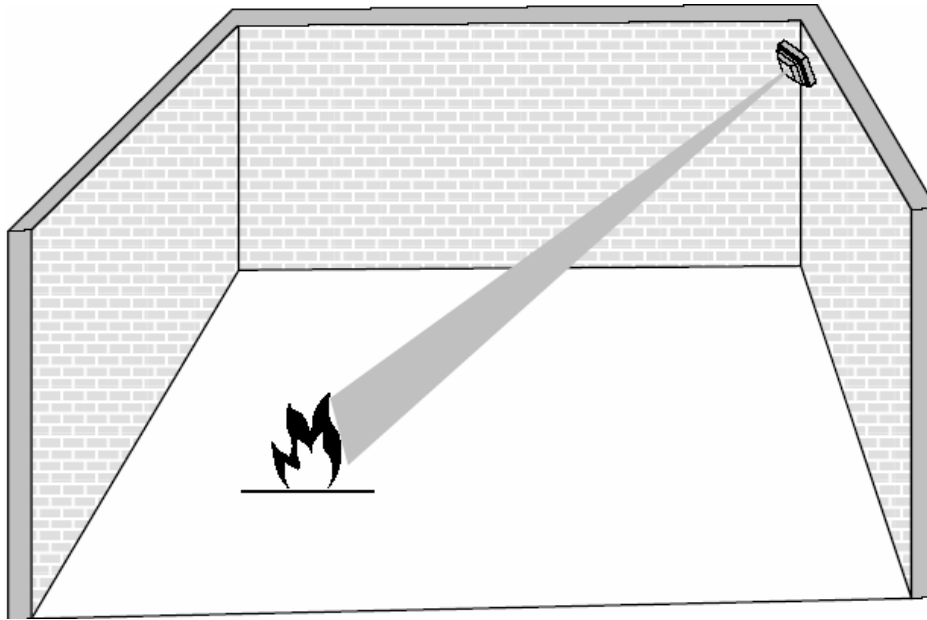
DIAGRAMA EN BLOQUE SISTEMA DE DETECCIÓN DE INCENDIOS



MONITOREO CON 4 DETECTORES DE LLAMA Y Y DETECTORES DE HUMO



Radiación directa es más efectiva



Máxima distancia de detección
ángulo 0°

